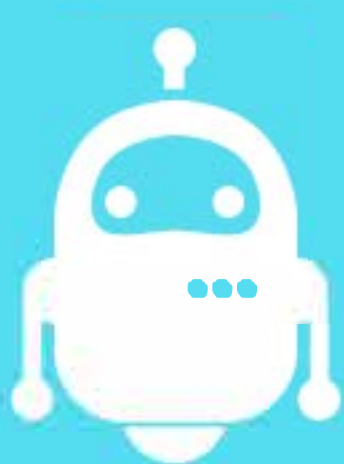


RPA and AI

The key components for automation, with different approaches to solve the business problems effectively.

Basic Definition

A software robot that mimics human actions.



Simulation of human intelligence by machines.



How does it work?

Automation in the RPA solution is based on well defined and repetitive rules. It is more process-centric.

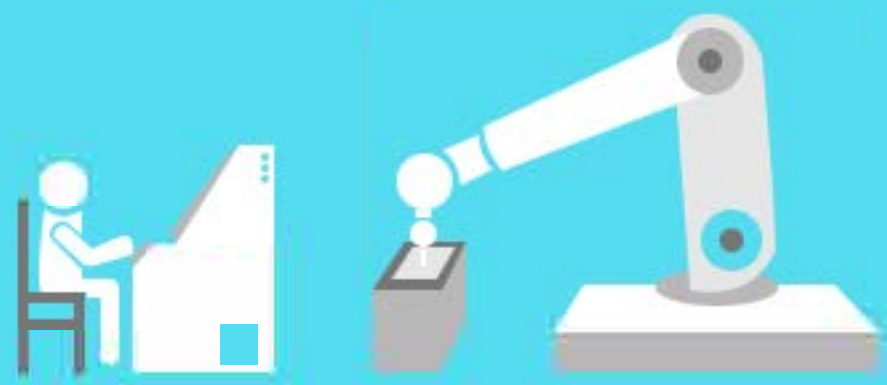


AI Solution relies on large quantity of data to create own rules without explicit programming. It is more data-driven.



What does it do?

RPA solution mimics human actions, use cases, and performs the tasks in a process.



System learns from data and mimics human intelligence such as visual recognition, speech recognition, etc.



Impact on IT system

No or very minimum change required in current IT system.



Significant changes could be required in current IT system.



What about the results?

Results from a RPA based solution are 100% deterministic in nature.



Results from an AI based solution are stochastic in nature.



Data needs

Works only with structured data (in some cases semi-structured as well).



Works with both structured and unstructured data.



Examples

Form filling, sending email, copy & paste jobs, printing, etc.



Sentiment analysis, image recognition, speech recognition, prediction, etc.

